

# TYSON

**HIGH POWER FLOOD LIGHT**  
PROJETOR DE ALTA POTÊNCIA

**OUTDOOR LIGHTING**  
ILUMINAÇÃO DE EXTERIOR



**brilumen**

Lighting emotions!

# TYSON

**HIGH POWER FLOODLIGHT**  
PROJETOR DE ALTA POTÊNCIA

**INNOVATIVE PRODUCT**  
PRODUTO INOVADOR



Brilumen introduces you the innovative Tyson, a powerful, efficient and versatile long-range LED floodlights, unique on the market.

This products range, composed of Citizen chips, can reach up to 1000W and has a high luminous efficiency up to 150 lumens per watt, far superior to any other floodlight in the market, including the metal halide with 2000W. The possibility of using the high power chips is mainly due to its high dissipation fixtures, which increase the products lifetime and do not allow to reach the chip limit.

A Brilumen apresenta os Inovadores Tyson, projetores LED de longo alcance bastante poderosos, eficientes, versáteis e únicos no mercado.

Esta gama de produtos, composta por chips Citizen, pode chegar até aos 1000W de potência e possui uma elevada eficiência luminosa de até 150 lúmens por watt, bastante superior a qualquer outro projetor do mercado, inclusive os de iodetos metálicos com 2000W. A possibilidade de utilização dos chips de alta potência deve-se principalmente às suas armaduras com elevado poder de dissipação, que aumentam a sua vida útil e não permitem que os chips alcancem o seu limite.

**APPLICATION**  
**AREAS • ÁREAS**  
**DE APLICAÇÃO**

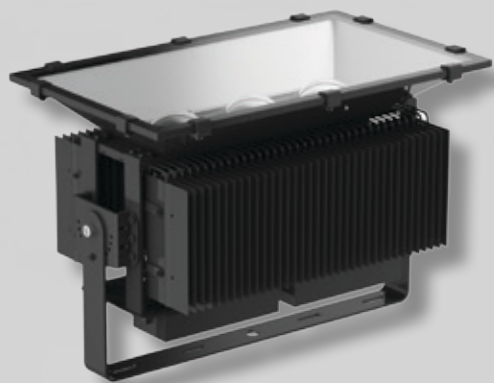


STADIUMS  
OUTDOOR PLAYING FIELDS  
MONUMENTS  
FACADES  
SEAPORTS

ESTÁDIOS  
CAMPOS DE JOGOS  
MONUMENTOS  
FACHADAS  
PORTOS MARÍTIMOS



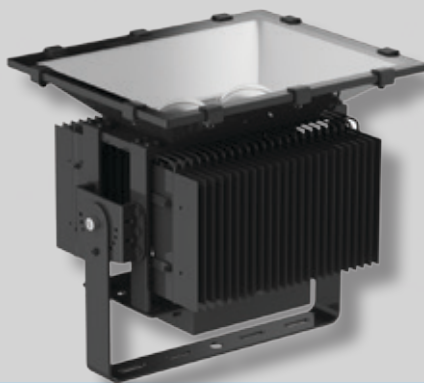




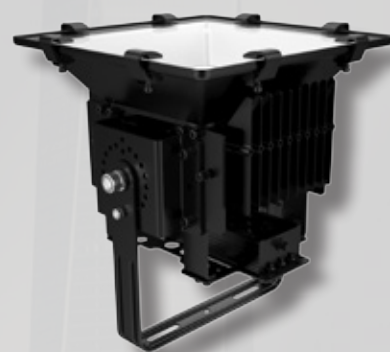
↗ 1000W

TRAINING AND  
TECHNICAL  
SUPPORT DURING  
INSTALLATION

FORMAÇÃO E  
APOIO TÉCNICO  
DURANTE A  
INSTALAÇÃO



↗ 750W



↗ 280W

TECHNICAL FEATURES características

ADVANTAGES vantagens

CRI .....	+70/+80/+90
Wattage .....	280W/400W/620W/750W/800W/900W/1000W
Potência .....	
LED Efficacy .....	up to/até 150lm/W
Eficiência luminosa do LED .....	
Colour temperature .....	3000K          4000K          5000K          5700K          6500K
Temperatura da cor .....	
Beam angle .....	6°→120°
Ângulo de Feixe .....	
Direction angle .....	180°/360°
Ângulo de oscilação .....	



**HIGH  
ENERGY  
EFFICIENCY**

**ALTA  
EFICIÊNCIA  
ENERGÉTICA**

EQUIVALENT TO 1000W AND  
2000W METAL HALIDE  
SAVINGS MORE THAN 60%

EQUIVALENTE AOS IODETOS  
METÁLICOS DE 1000W E 2000W  
POUPANÇA SUPERIOR A 60%

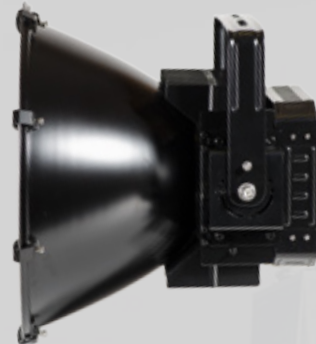
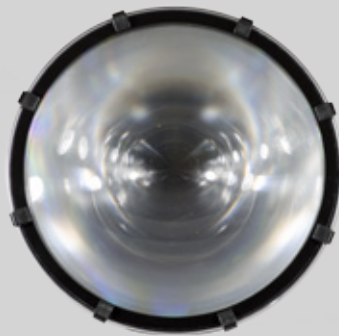
VOLTAGE TENSÃO	CLASS I CLASSE I	IP65	PF >0.95	DIMMABLE DIMÁVEL 0-10V	DRIVER	LED TYPE . TIPO DE LED

# TYSON

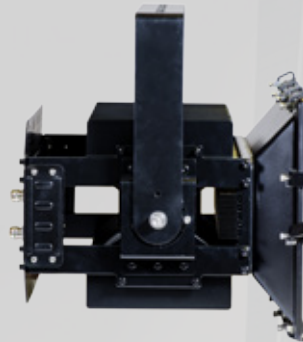
HIGH POWER FLOODLIGHT  
PROJETOR DE ALTA POTÊNCIA



CONICAL + FRESNEL LENSE  
CÓNICOS + LENTE FRESNEL



PARABOLIC REFLECTORS  
REFLETORES PARABÓLICOS



SILICONE LENSES  
LENTES DE SILICONE



## LIGHTING DETAILS detalhes de iluminação

Thanks to the different types of lenses and reflectors, TYSON floodlights allow you to create multiple beam angles that go from the 6°, a very closed angle, with light quite concentrated and ideal for lighting very distant objects, up to 120°, a very open angle, ideal for lighting large areas such as stadiums, outdoor playing fields, car parks, etc.

Graças aos diferentes tipos de lentes e refletores, os projetores TYSON permitem criar diversos ângulos de feixe que vão desde os 6°, ângulo muito fechado, com luz bastante concentrada e ideal para iluminar objetos muito distantes, até aos 120°, ângulo muito aberto, ideal para iluminar grandes áreas, como estádios, campos de jogos, parques de estacionamento, etc.

8° 6°

CONICAL + LENSES  
CÓNICOS + LENTES

45° 25° 15°

PARABOLIC REFLECTORS  
REFLETORES PARABÓLICOS

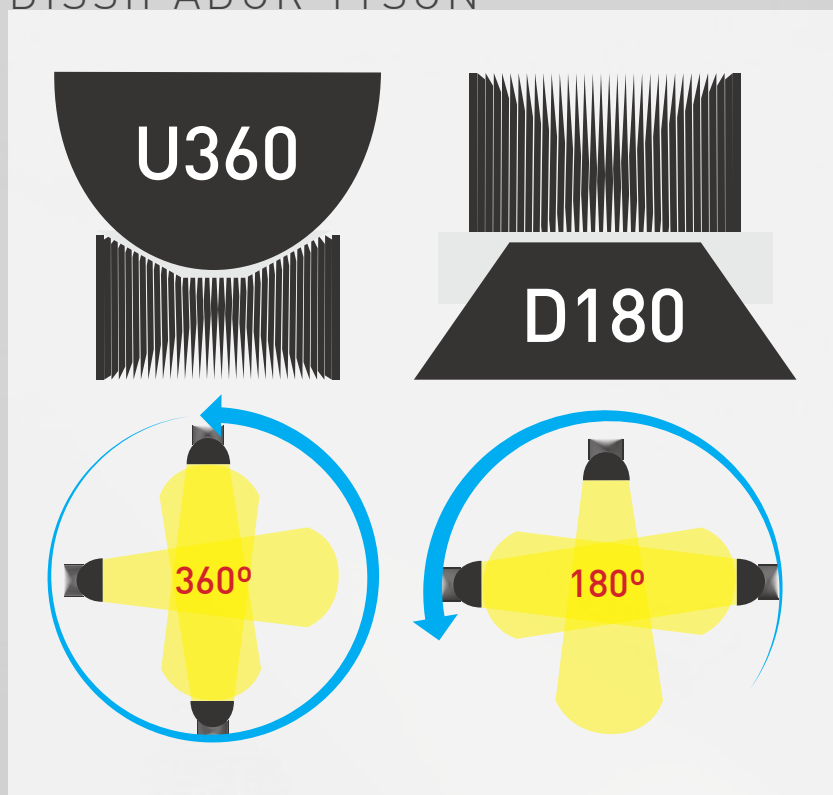
120° 90° 60°

SILICONE LENSES  
LENTES DE SILICONE

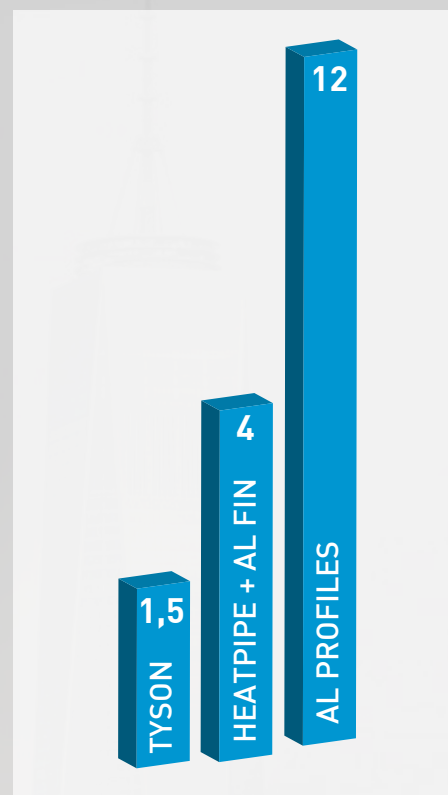


# TYSON HEATSINK

## DISSIPADOR TYSON



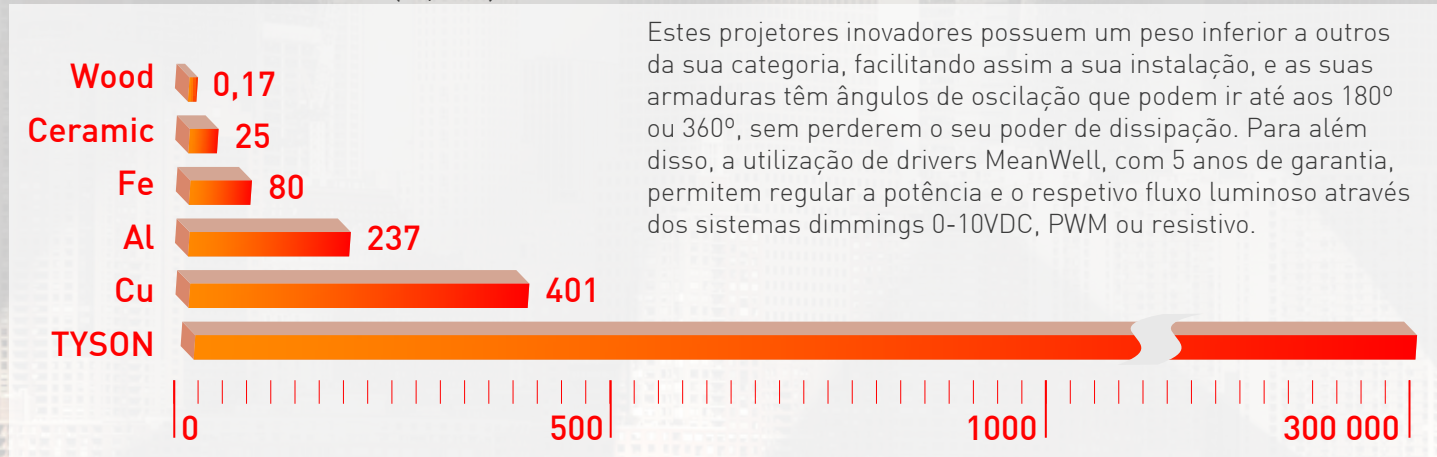
**DIRECTION ANGLE UP TO 360°**  
**ÂNGULO DE OSCILAÇÃO ATÉ 360°**



**HEATSINK WEIGHT (Kg) 300W**  
**PESO DO DISSIPADOR (Kg) 300W**

### TERMAL CONDUCTIVITY (W/mK)

### CONDUTIVIDADE TÉRMICA (W/mK)



These innovative floodlights are easy to install due to its lower weight when compared to others in its category, and their fixtures have direction angles that can go up to 180° or 360°, without losing its dissipation power. In addition, the MeanWell drivers used, with a 5 year warranty, allows you to adjust the power and its luminous flux through the 0-10VDC, PWM or resistive dimming systems.

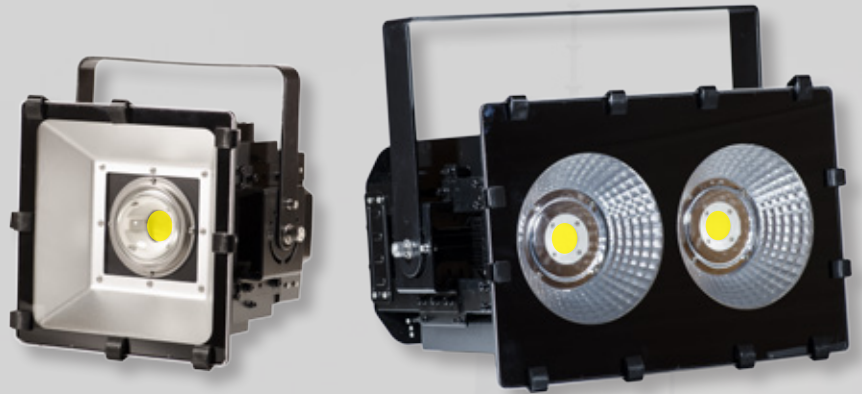
Estes projetores inovadores possuem um peso inferior a outros da sua categoria, facilitando assim a sua instalação, e as suas armaduras têm ângulos de oscilação que podem ir até aos 180° ou 360°, sem perderem o seu poder de dissipação. Para além disso, a utilização de drivers MeanWell, com 5 anos de garantia, permitem regular a potência e o respetivo fluxo luminoso através dos sistemas dimmings 0-10VDC, PWM ou resistivo.

# TYSON

HIGH POWER FLOODLIGHT  
PROJETOR DE ALTA POTÊNCIA

## CONFIGURATION OPTIONS

OPÇÕES DE  
CONFIGURAÇÃO



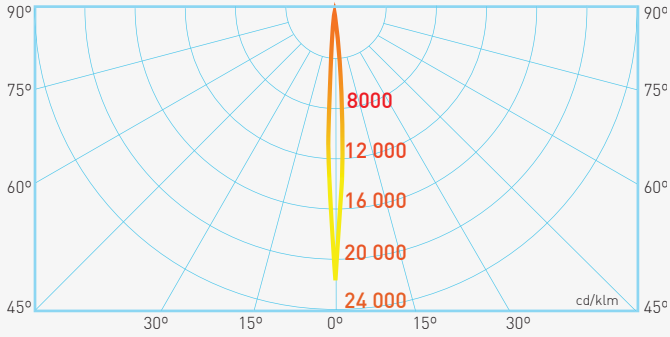
## TYSON D180

REFLECTOR TYPES TIPOS DE REFLETORES	BEAM ANGLE ÂNGULO DE FEIXE	280W	400W	620W	750W	800W	900W	1000W
CONICAL + FRESNEL LENSE CÓNICOS + LENTE FRESNEL	6°							
	8°							
PARABOLIC REFLECTORS REFLETORES PARABÓLICOS	15°			✓		✓		
	25°			✓		✓		
	45°			✓		✓	✓	✓
SILICONE LENSES LENTES DE SILICONE	60°			✓		✓	✓	✓
	90°			✓		✓	✓	✓
	120°			✓		✓	✓	✓

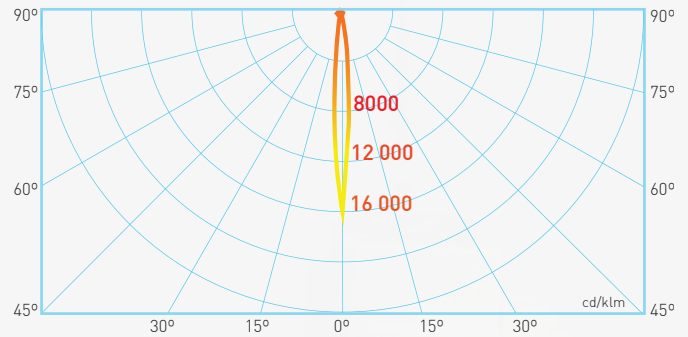
## TYSON U360

REFLECTOR TYPES TIPOS DE REFLETORES	BEAM ANGLE ÂNGULO DE FEIXE	280W	400W	620W	750W	800W	900W	1000W
CONICAL + FRESNEL LENSE CÓNICOS + LENTE FRESNEL	6°		✓					
	8°		✓					
PARABOLIC REFLECTORS REFLETORES PARABÓLICOS	15°	✓	✓	✓	✓	✓		
	25°	✓	✓	✓	✓	✓		
	45°	✓	✓	✓	✓	✓		
SILICONE LENSES LENTES DE SILICONE	60°	✓	✓	✓	✓	✓		
	90°	✓	✓	✓	✓	✓		
	120°	✓	✓	✓	✓	✓		

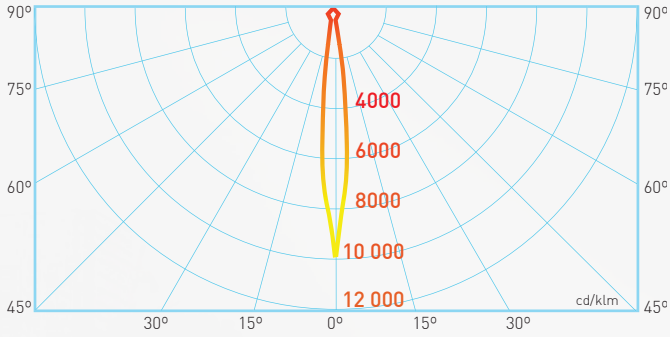
TYSON 6°



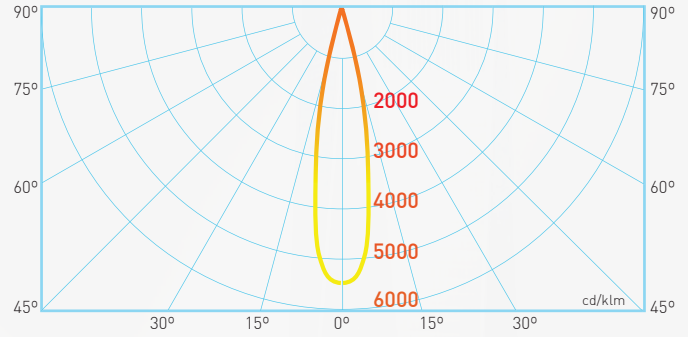
TYSON 8°



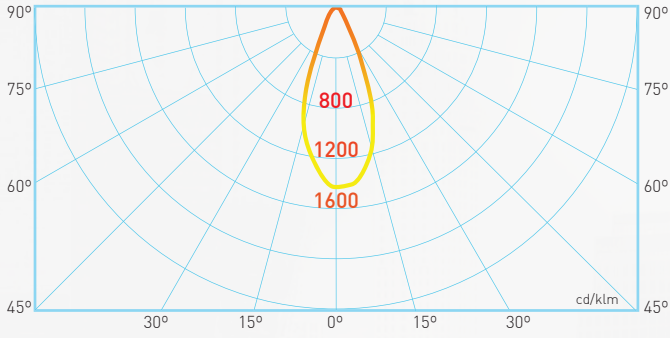
TYSON 15°



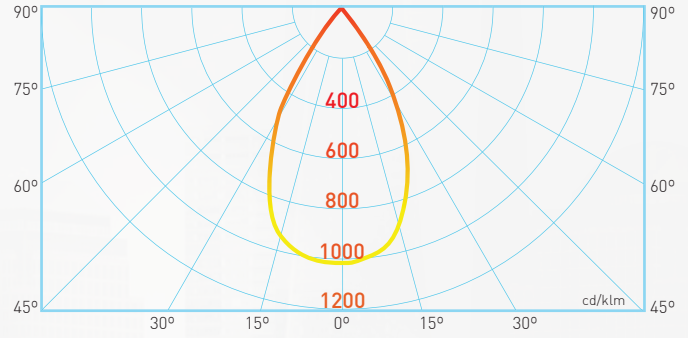
TYSON 25°



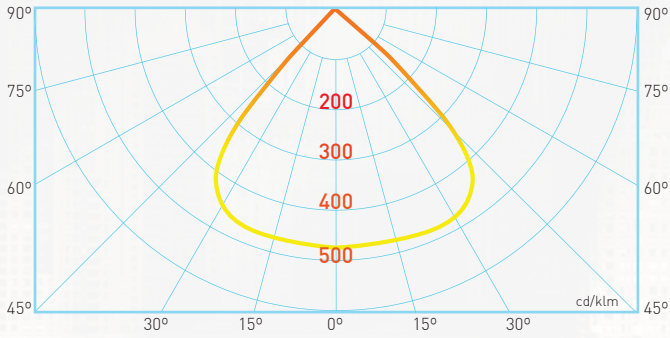
TYSON 45°



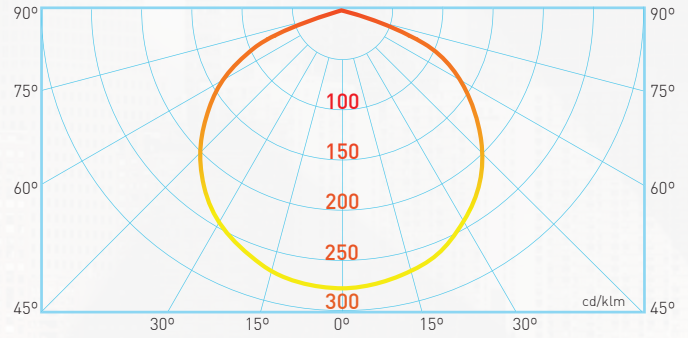
TYSON 60°



TYSON 90°



TYSON 120°



**POLAR INTENSITY DIAGRAMS**  
**DIAGRAMAS POLARES**

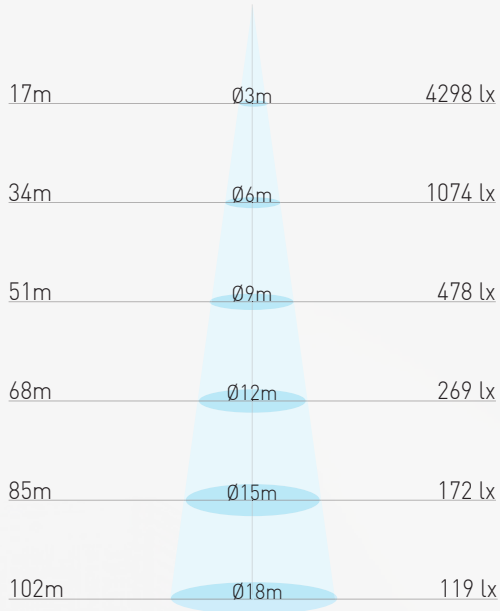


# TYSON

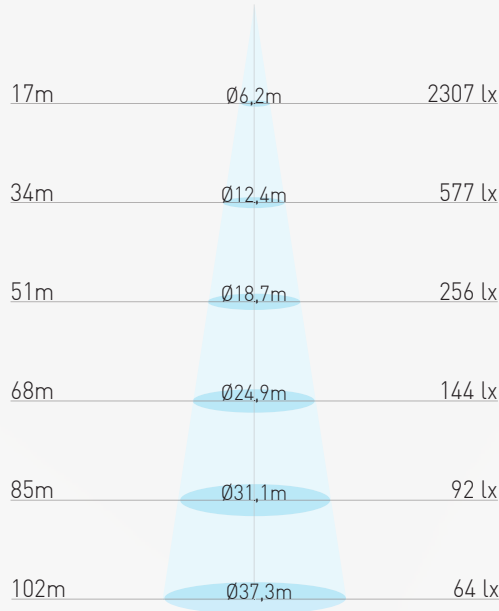
HIGH POWER FLOODLIGHT  
PROJETOR DE ALTA POTÊNCIA

## TYSON D180

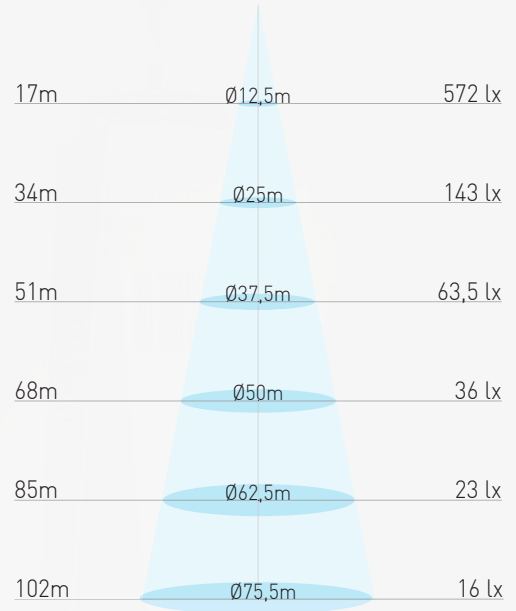
800W.15°.4000K.CRI 70



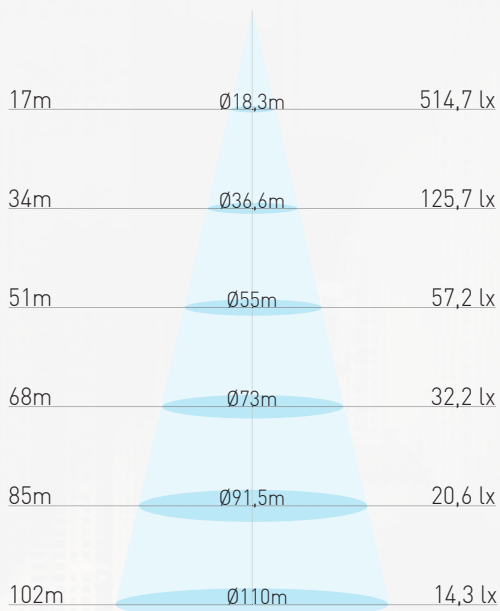
800W.25°.4000K.CRI 70



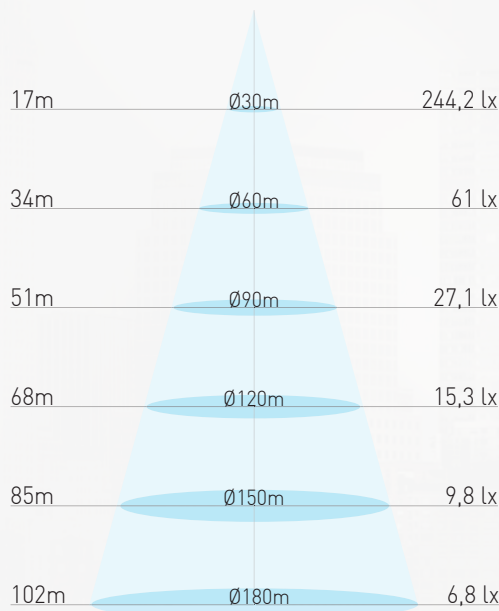
800W.45°.4000K.CRI 70



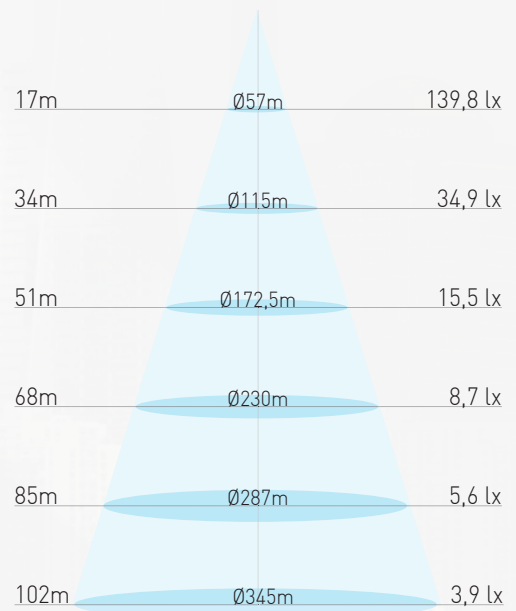
1000W.60°.4000K.CRI 70



1000W.90°.4000K.CRI 70



1000W.120°.4000K.CRI 70

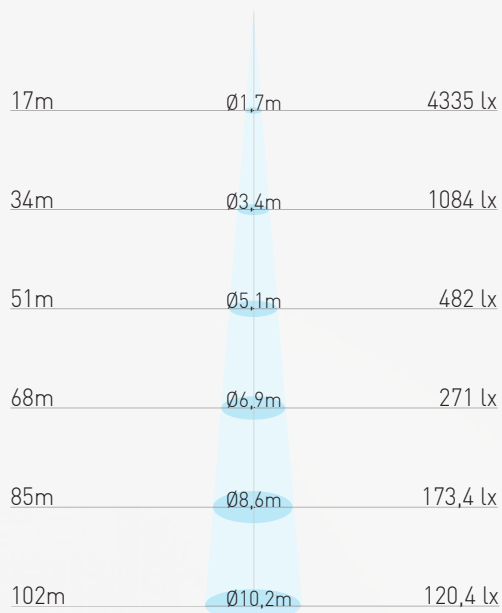


LUX DIAGRAMS  
DIAGRAMAS DE LUX

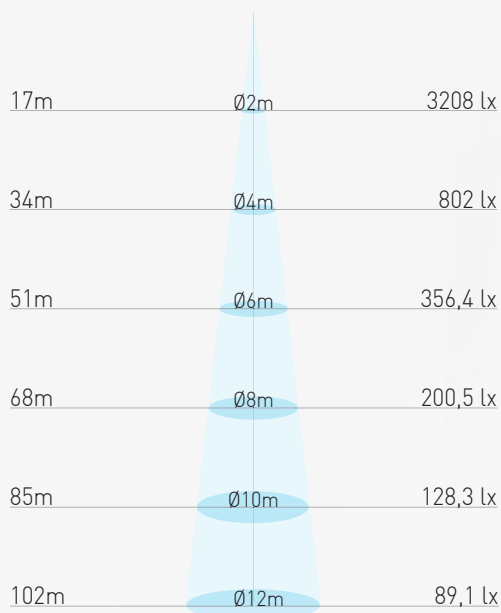


# TYSON U360

400W.6°.4000K.CRI 70



400W.8°.4000K.CRI 70



400W.15°.4000K.CRI 70



The innovators Tyson are the only wide range floodlights that perfectly combine the high power use with a tremendous luminous efficiency.

Os inovadores TYSON são os únicos projetores de longo alcance que aliam na perfeição a utilização de altas potências com uma elevada eficiência luminosa.

**LUX DIAGRAMS**  
DIAGRAMAS DE LUX

# TYSON

HIGH POWER FLOODLIGHT  
PROJETOR DE ALTA POTÊNCIA

## D180

PRODUCT  
CODE FOR  
EACH OPTION  
CÓDIGOS DOS  
PRODUTOS PARA  
CADA OPÇÃO



Code . Código  
**720.80.BA.CT**

**.BA**

BEAM ANGLE OPTIONS  
OPÇÕES DE ÂNGULO DE FEIXE

Please change .BA by one of the following options. Por favor altere .BA por uma das seguintes opções.

1° suffix:

.6	6°	.45	45°
.8	8°	.60	60°
.15	15°	.90	90°
.25	25°	.120	120°

**.CT**

COLOR TEMPERATURE OPTIONS\*  
OPÇÕES DE TEMPERATURA DA COR\*

Please change .CT by one of the following options. Por favor altere .CT por uma das seguintes opções.

2° suffix:

.30	3000K
.40	4000K
.50	5000K
.57	5700K
.65	6500K

Order code	Power	Beam angle	CCT	CRI	Led lumens	Luminaire lumens	LED Efficacy lm/W	Lifetime L80
720.70.BA.CT	620W	15°	3000K	>70	→ 93.620	→ 73.960	→ 151	→ 65.000
720.80.BA.CT		25°		>80	→ 87.420	→ 69.062	→ 141	
720.90.BA.CT		45°		>90	→ 73.160	→ 57.796	→ 118	
721.70.BA.CT		60°		>70	→ 93.620	→ 76.768	→ 151	
721.80.BA.CT		90°		>80	→ 87.420	→ 71.684	→ 141	
721.90.BA.CT		120°		>90	→ 73.160	→ 59.991	→ 118	
722.70.BA.CT	800W	15°	4000K	>70	→ 120.800	→ 95.432	→ 151	
722.80.BA.CT		25°	>80	→ 112.800	→ 89.112	→ 141		
722.90.BA.CT		45°	>90	→ 94.400	→ 74.576	→ 118		
723.70.BA.CT		60°	>70	→ 120.800	→ 99.056	→ 151		
723.80.BA.CT		90°	>80	→ 112.800	→ 92.496	→ 141		
723.90.BA.CT		120°	>90	→ 94.400	→ 77.408	→ 118		
724.70.BA.CT	900W	45° 60°	*	>70	→ 135.900	→ 111.438	→ 151	
724.80.BA.CT		90°		>80	→ 126.900	→ 104.058	→ 141	
724.90.BA.CT		120°		>90	→ 106.200	→ 87.084	→ 118	
725.70.BA.CT	1000W	45° 60°	*	>70	→ 151.000	→ 123.820	→ 151	
725.80.BA.CT		90°		>80	→ 141.000	→ 115.620	→ 141	
725.90.BA.CT		120°		>90	→ 118.000	→ 96.760	→ 118	

\*Please refer to the options of color temperatures available in the table of the next page

\*Por favor, consulte as opções de temperaturas da cor disponíveis na tabela da página seguinte





# U360

**PRODUCT CODE FOR EACH OPTION**  
CÓDIGOS DOS PRODUTOS PARA CADA OPÇÃO

Order code	Power	Beam angle	CCT	CRI	Led lumens	Luminaire lumens	LED Efficacy lm/W	Lifetime L80
730.70.BA.CT	280W	15°	3000K 4000K 5000K 5700K 6500K *	>70	→ 44.240	→ 34.950	→ 158	→ 65.000
730.80.BA.CT		25°		>80	→ 42.560	→ 33.622	→ 152	
730.90.BA.CT		45°		>90	→ 35.840	→ 28.314	→ 128	
731.70.BA.CT		60°		>70	→ 44.240	→ 36.277	→ 158	
731.80.BA.CT		90°		>80	→ 42.560	→ 34.899	→ 152	
731.90.BA.CT		120°		>90	→ 35.840	→ 29.389	→ 128	
732.70.BA.CT	400W	6°		>70	→ 60.400	→ 45.300	→ 151	
732.80.BA.CT		8°		>80	→ 56.400	→ 42.300	→ 141	
732.90.BA.CT				>90	→ 47.200	→ 35.400	→ 118	
733.70.BA.CT		15°		>70	→ 60.400	→ 47.716	→ 151	
733.80.BA.CT		25°		>80	→ 56.400	→ 44.556	→ 141	
733.90.BA.CT		45°		>90	→ 47.200	→ 37.288	→ 118	
734.70.BA.CT	620W	60°		>70	→ 60.400	→ 49.528	→ 151	
734.80.BA.CT		90°		>80	→ 56.400	→ 46.248	→ 141	
734.90.BA.CT		120°		>90	→ 47.200	→ 38.704	→ 118	
735.70.BA.CT		15°		>70	→ 93.620	→ 73.960	→ 151	
735.80.BA.CT		25°		>80	→ 87.420	→ 69.062	→ 141	
735.90.BA.CT		45°		>90	→ 73.160	→ 57.796	→ 118	
736.70.BA.CT	750W	60°		>70	→ 93.620	→ 76.768	→ 151	
736.80.BA.CT		90°		>80	→ 87.420	→ 71.684	→ 141	
736.90.BA.CT		120°		>90	→ 73.160	→ 59.991	→ 118	
737.70.BA.CT		15°		>70	→ 113.250	→ 89.468	→ 151	
737.80.BA.CT		25°		>80	→ 105.750	→ 83.543	→ 141	
737.90.BA.CT		45°		>90	→ 88.500	→ 69.915	→ 118	
738.70.BA.CT	800W	60°	>70	→ 113.250	→ 92.865	→ 151		
738.80.BA.CT		90°	>80	→ 105.750	→ 86.715	→ 141		
738.90.BA.CT		120°	>90	→ 88.500	→ 72.570	→ 118		
739.70.BA.CT		15°	>70	→ 120.800	→ 99.056	→ 151		
739.80.BA.CT		25°	>80	→ 112.800	→ 92.496	→ 141		
739.90.BA.CT		45°	>90	→ 94.400	→ 77.408	→ 118		
740.70.BA.CT	800W	60°	>70	→ 120.800	→ 99.056	→ 151		
740.80.BA.CT		90°	>80	→ 112.800	→ 92.496	→ 141		
740.90.BA.CT		120°	>90	→ 94.400	→ 77.408	→ 118		

\*OPTIONS AVAILABLE REGARDING TO CRI AND COLOR TEMPERATURE

\*OPÇÕES DISPONÍVEIS DEPENDENDO DO CRI E DA TEMPERATURA DA COR

CRI>70	CRI>80	CRI>90
3000K	3000K	
4000K	4000K	
5000K	5000K	
		5700K
6500K	6500K	