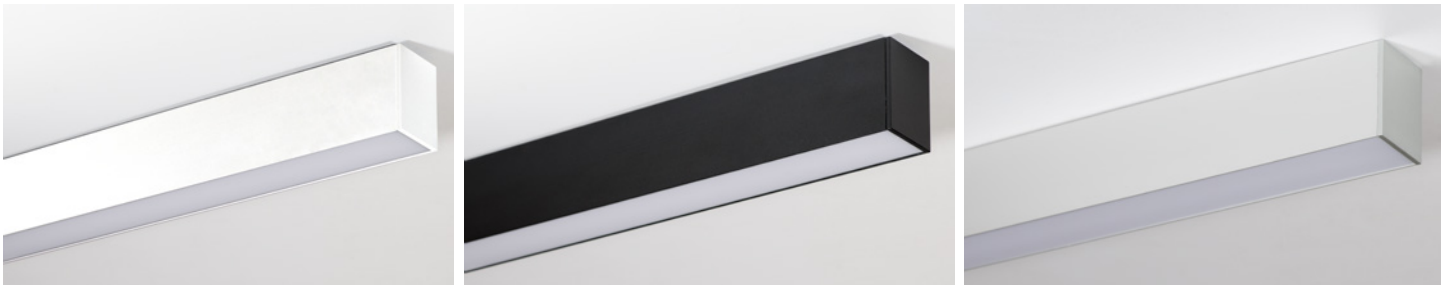
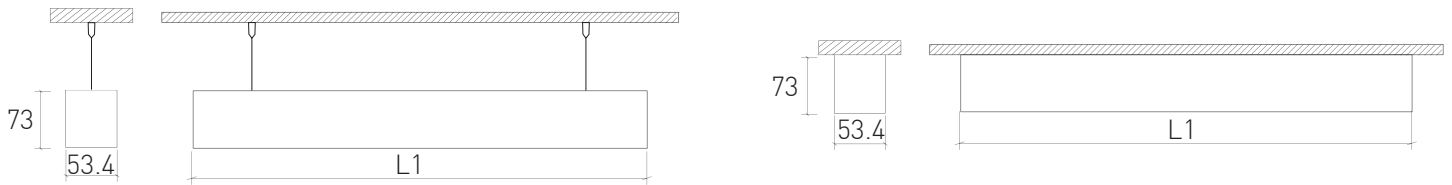


BRILUMEN DATA SHEET



Invisible screw end cap only on request! Topo com parafusos invisíveis somente sob encomenda!

	VOLTAGE TENSÃO	CLASS I CLASSE I	IP40	90°	CRI > 80	TYPE	LED + DRIVER		



Suspension kit 1500mm . Kit de suspensão 1500mm



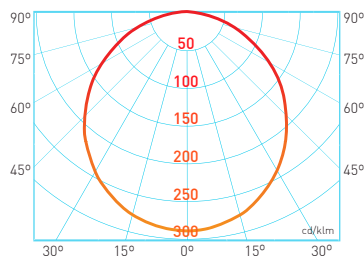
ACCESSORY	DESCRIPTION
6080-007	Emergency Kit Tridonic 150W 50-200VDC 3H 4 cells . Kit de emergência 150W 50-200VDC 3H 4 células

VOLTAGE TENSÃO	CLASS II CLASSE II	IP20	EN 60598-2-22			

* Battery warranty: only 1 year
Garantia da bateria: só 1 ano

ACCESSORY	DESCRIPTION
8030-0032	Smart Switch Kit for Oris+ > 6m * Kit c/ sensor de presença e luminosidade (SmartSwitch) p/ Oris+ > 6m *

* The Smart Switch accessory implies an increase of 90mm to the standard lengths.
O sensor de movimento e luminosidade implica um acréscimo de 90mm aos comprimentos standard.



Length	Beam Diameter	Illuminance (lx)
1m	Ø3,3m	1.382,5 lx
2m	Ø6,5m	345,6 lx
3m	Ø9,8m	153,6 lx
4m	Ø13m	86,4 lx
5m	Ø16,3m	55,3 lx
6m	Ø19,5m	38,4 lx

ORIS+ 36W 4000K CRI80 1130MM

Length	Beam Diameter	Illuminance (lx)
1m	Ø3,3m	2.421,6 lx
2m	Ø6,5m	605,4 lx
3m	Ø9,8m	269,1 lx
4m	Ø13m	151,4 lx
5m	Ø16,3m	96,9 lx
6m	Ø19,5m	67,3 lx

ORIS+ 64W 4000K CRI80 1970MM

Length	Beam Diameter	Illuminance (lx)
1m	Ø3,3m	3.804,5 lx
2m	Ø6,5m	951,1 lx
3m	Ø9,8m	422,7 lx
4m	Ø13m	237,8 lx
5m	Ø16,3m	152,2 lx
6m	Ø19,5m	105,7 lx

ORIS+ 100W 4000K CRI80 3090MM

BRILUMEN DATA SHEET

ORDER OPTIONS

OPÇÕES DE ENCOMENDA



ON REQUEST: Dimmable options
SOB PEDIDO: Opções dimáveis

ORIS+ Efficiency Surface Mounted / Saliente	ORIS+ Efficiency Suspended / Suspenso	POWER	LENGTH (L1)	LED LUMENS	LUMINAIRE LUMENS	LED EFFICACY
150.80.05.09.CT.FI *	152.80.05.09.CT.FI *	18W	570mm	2450 lm	2083 lm	136 lm/W
150.80.08.09.CT.FI *	152.80.08.09.CT.FI *	28W	850mm	3680 lm	3128 lm	131 lm/W
150.80.11.09.CT.FI *	152.80.11.09.CT.FI *	36W	1130mm	4900 lm	4165 lm	136 lm/W
150.80.14.09.CT.FI *	152.80.14.09.CT.FI *	45W	1410mm	6130 lm	5211 lm	136 lm/W
150.80.16.09.CT.FI *	152.80.16.09.CT.FI *	54W	1690mm	7350 lm	6248 lm	136 lm/W
150.80.19.09.CT.FI *	152.80.19.09.CT.FI *	64W	1970mm	8580 lm	7293 lm	134 lm/W
150.80.22.09.CT.FI *	152.80.22.09.CT.FI *	73W	2250mm	9800 lm	8330 lm	134 lm/W
150.80.25.09.CT.FI *	152.80.25.09.CT.FI *	82W	2530mm	11.030 lm	9376 lm	134 lm/W
150.80.28.09.CT.FI *	152.80.28.09.CT.FI *	91W	2810mm	12.250 lm	10.413 lm	133 lm/W
150.80.30.09.CT.FI *	152.80.30.09.CT.FI *	100W	3090mm	13.480 lm	11.458 lm	134 lm/W
150.80.33.09.CT.FI *	152.80.33.09.CT.FI *	110W	3370mm	14.700 lm	12.495 lm	133 lm/W
150.80.36.09.CT.FI *	152.80.36.09.CT.FI *	119W	3650mm	15.930 lm	13.541 lm	133 lm/W
150.80.39.09.CT.FI *	152.80.39.09.CT.FI *	128W	3930mm	17.150 lm	14.578 lm	134 lm/W
150.80.42.09.CT.FI *	152.80.42.09.CT.FI *	137W	4210mm	18.380 lm	15.623 lm	134 lm/W
150.80.44.09.CT.FI *	152.80.44.09.CT.FI *	146W	4490mm	19.600 lm	16.660 lm	134 lm/W
150.80.47.09.CT.FI *	152.80.47.09.CT.FI *	155W	4770mm	20.830 lm	17.706 lm	133 lm/W
150.80.50.09.CT.FI *	152.80.50.09.CT.FI *	165W	5050mm	22.050 lm	18.743 lm	133 lm/W
150.80.53.09.CT.FI *	152.80.53.09.CT.FI *	174W	5330mm	23.280 lm	19.788 lm	133 lm/W
150.80.56.09.CT.FI *	152.80.56.09.CT.FI *	183W	5610mm	24.500 lm	20.825 lm	133 lm/W
150.80.59.09.CT.FI *	152.80.59.09.CT.FI *	192W	5900mm	25.730 lm	21.871 lm	134 lm/W

.CT _____ **.FI**

COLOUR TEMPERATURE OPTIONS OPÇÕES DE TEMPERATURA DA COR

Please change .CT by one of the following options.
Por favor altere .CT por uma das seguintes opções.

1° suffix: .30 3000K .40 4000K

Other CCT available on request, subject to minimum quantity.
Outros CCT disponível sob pedido, sujeito a quantidade mínima.

FINISHING OPTIONS OPÇÕES DE ACABAMENTO

Please change .FI by one of the following options.
Por favor altere .FI por uma das seguintes opções.

2° suffix: TW RAL9003 TB RAL9017

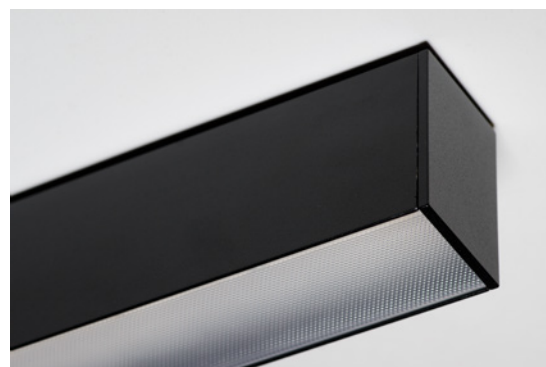
AL Anodized aluminium
Alumínio anodizado

ACCESSORIES OPTIONS

OPÇÕES DE ACESSÓRIOS

CEILING CUP (.FI = finishing . Please choose between the finishing options above)
FLORÃO DE TETO (.FI = acabamento . Escolha entre as opções de acabamento acima)

PRODUCT CODE	DESCRIPTION
3080-015.FI	60mm round ceiling cup with 2 holes for electric cable Florão de teto 60mm com 2 orifícios para cabo elétrico
3080-016.FI	90mm round ceiling cup with 1 hole for electric cable Florão de teto 90mm com 1 orifício para cabo elétrico



* O9 = opal diffuser with 90° beam angle . difusor opalino com ângulo de feixe de 90°

Please change O9 by P9 if you want to order a prismatic diffuser. Por favor substitua O9 por P9, se pretender encomendar um difusor prismático.