

brilumen®



REVO TRUNKING SYSTEM

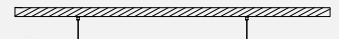
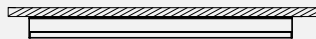
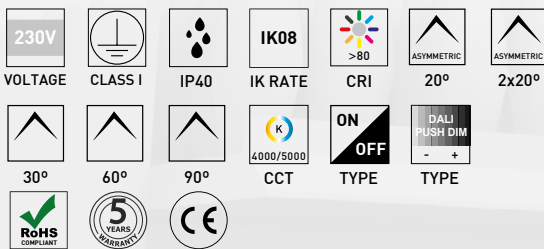
INDOOR - LINEAR LED SYSTEMS



REVO

TRUNKING SYSTEM

DIRECT LIGHT



EN

REVO is a tailor-made LED lighting solution for large retail stores such as supermarkets, warehousing and industrial environments, which is characterized by maximum efficiency, a high flexibility and a short return on investment.

It stands out for its differentiating design and its high technology, integrating LEDs that allow to reach 204lm/W and a state of the art lenses, with optical effects that allow professional lighting, highlighting the products and reducing the level of glare, providing a high quality and comfortable lighting to look at.

Thanks to an effective clipping system, REVO is an evolving trunking light on which you can easily combine Efficiency, High Performance or Blind Cover modules into one main rail according to the local needs, minimizing total cost (low energy consumption, mounting and maintenance costs).

The REVO Trunking system made of extruded aluminium has a 5 Year Warranty, is available in suspended or surface mounted version, in ON-OFF or DALI mode, with or without an emergency kit and can be integrated into a Smart Lighting system.

You can choose between 4000K or 5000K colour temperature and textured white or black or natural anodized aluminium finishing colours.

REVO is an ideal solution if you are looking for a versatile and quick mounting Trunking system that fits all the industrial and retail requirements.

PT

O REVO é uma solução de iluminação LED à medida, para grandes lojas de retalho como hipermercados, área de armazenamento e ambientes industriais, que se caracteriza pela eficiência máxima, alta flexibilidade e rápido retorno do investimento.

Destaca-se pelo seu design diferenciador e a sua tecnologia avançada, integrando LEDs que permitem atingir 204lm/W e lentes de última geração, com efeitos óticos que permitem uma iluminação profissional, destacando os produtos e reduzindo o nível de encandeamto, proporcionando uma iluminação de qualidade e confortável para o olhar.

Grças a um eficaz sistema de molas, o REVO é um sistema evolutivo de iluminação em calha de luz, na qual pode combinar facilmente módulos de iluminação Efficiency, High Performance ou tampa cega, numa calha principal, de acordo com as necessidades do local a iluminar, minimizando o custo total (baixo consumo de energia, custos de montagem e manutenção). O sistema REVO, em alumínio extrudido, tem uma garantia de 5 anos, está disponível na versão de montagem suspensa ou saliente, no modo ON-OFF ou DALI, com ou sem kit de emergência e pode ser integrado num sistema de iluminação

inteligente. Pode escolher a temperatura da cor 4000K ou 5000K e as cores de acabamento em preto ou branco texturado, ou alumínio anodizado natural.

O REVO é a solução ideal se estiver à procura de um sistema de iluminação "trunking" versátil e único, de montagem rápida e que responde a todos os requisitos industriais e do retalho.

FR

REVO est une solution d'éclairage LED sur mesure pour les grands magasins tels que les hypermarchés, les entrepôts et les environnements industriels, caractérisée par une efficacité maximale, une grande flexibilité et un retour sur investissement à court terme.

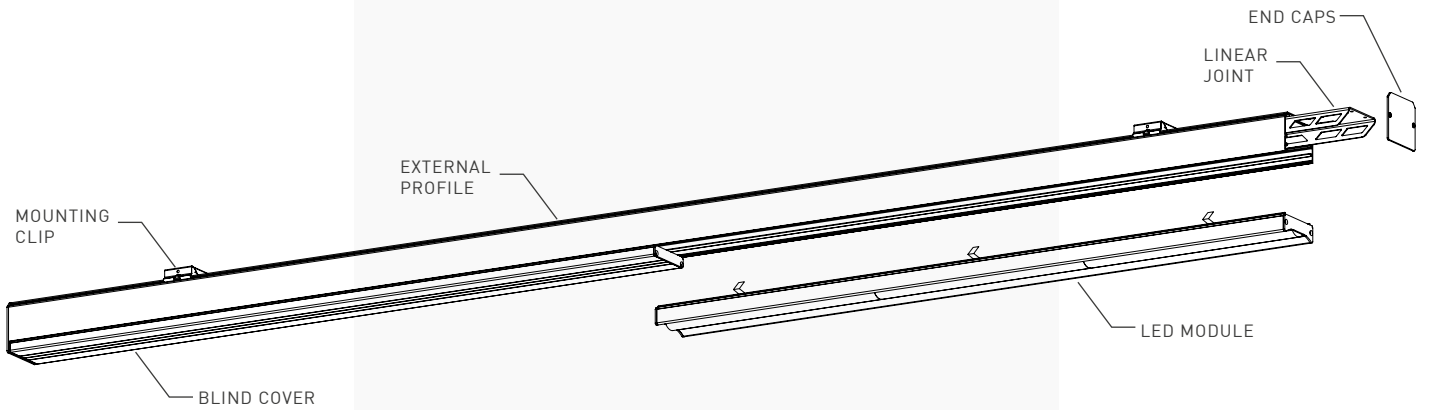
REVO se distingue par son design différenciateur et sa technologie de pointe, intégrant des LED pouvant atteindre 204 lm/W et des lentilles à la pointe de la technologie, permettant des effets optiques adaptés à un éclairage professionnel, mettant en valeur les produits et réduisant le niveau

d'éblouissement, fournissant un éclairage de haute qualité et confortable à regarder.

Grâce à un système de ressort efficace, REVO est un système d'éclairage évolutif, dans lequel vous pouvez facilement combiner des modules d'éclairage « Efficiency », « High Performance » ou l'accessoire de cache aveugle, dans un même rail principal, en fonction des besoins du local, tout en minimisant le coût total (faible consommation d'énergie, coûts de montage et de maintenance). Le système REVO, en aluminium extrudé, bénéficie d'une garantie de 5 ans.

Il est disponible en version suspendue ou en saillie, en mode ON-OFF ou DALI, avec ou sans kit d'urgence et peut être intégré dans un système d'éclairage intelligent (Smart Lighting). Vous pouvez choisir la température de couleur entre 4000K ou 5000K, et les couleurs de finition en noir ou blanc texturé, ou en aluminium anodisé naturel.

REVO est la solution idéale si vous recherchez un système de rails polyvalent et rapide à monter, qui répond à toutes les exigences de l'industrie et du commerce de détail.



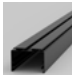
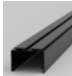








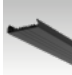



ORDER BUILD

Configurador de encomenda / Configurateur de commande

Choose External Profile
Escolha o Perfil Externo
Choisissez le Profil Externe

Choose the LED Module and Optics
Escolha o Módulo de LED e os Ópticos
Choisissez le Module LED et Optiques

Choose Accessories
Escolha os Acessórios
Choisissez les Accessoires

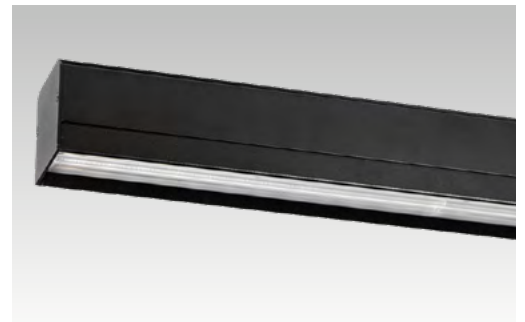
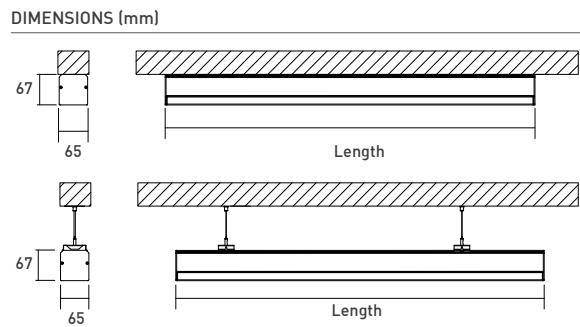
<p>1</p> <div style="margin-bottom: 10px;">  <p>SUSPENDED SUSPENSO SUSPENDU</p> </div> <div>  <p>SURFACE SUPERFÍCIE SURFACE</p> </div>	<p>2</p> <p>2.1 Efficiency - CRI80</p> <div style="display: flex; align-items: center; gap: 10px;">  <div> <p>ON/OFF ON/OFF ON/OFF</p> </div>  <div> <p>DALI DALI DALI</p> </div> </div> <p>2.2 High Performance - CRI80</p> <div style="display: flex; align-items: center; gap: 10px;">  <div> <p>ON/OFF ON/OFF ON/OFF</p> </div>  <div> <p>DALI DALI DALI</p> </div> </div>	<p>3</p> <div style="display: flex; flex-wrap: wrap; gap: 10px;"> <div style="width: 50%;">  <p>WIRING OPTIONS OPÇÕES DE CABLAGEM OPTIONS DE CÂBLAGE</p> </div> <div style="width: 50%;">  <p>END CAPS TOPOS EMBOUTS</p> </div> <div style="width: 50%;">  <p>POWER CABLES CABOS DE ALIMENTAÇÃO CÂBLES D'ALIMENTATION</p> </div> <div style="width: 50%;">  <p>EMERGENCY KIT KIT DE EMERGÊNCIA KIT D'URGENCE</p> </div> <div style="width: 50%;">  <p>BLIND COVER TAMPA CEGA CACHE AVEUGLE</p> </div> <div style="width: 50%;">  <p>MOUNTING CLIP MOLA DE FIXAÇÃO CLIP DE MONTAGE</p> </div> <div style="width: 50%;">  <p>SUSPENSION KITS KITS DE SUSPENSÃO KITS DE SUSPENSION</p> </div> <div style="width: 50%;">  <p>LINEAR JOINT EMENDA LINEAR AMENDEMENT LINÉAIRE</p> </div> </div>
---	---	--



GENERAL INFO
 Trunking System
 Suspended / Surface
 Class I
 IP40

BEAM ANGLE
 30° / 60° / 90° / 20° Asym / 2x 20° Asym

LED PCB
 4000K / 5000K
 CRI>80
 Lifetime 50.000h Tp 55°C
 3 Steps MacAdam



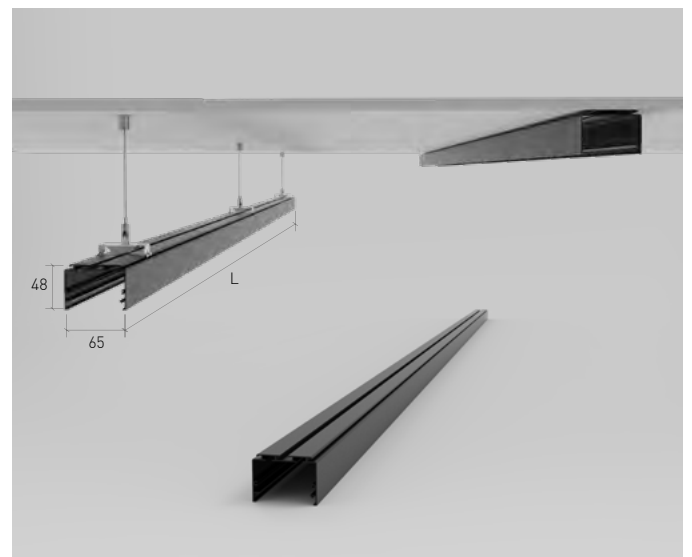
1 External Profile
 Perfil Externo / Profil Externe

LENGTH	SUSPENDED/SURFACE
850 mm	3650850.FI
1700 mm	3651700.FI
2550 mm	3652550.FI
3400 mm	3653400.FI

Select your preferred option

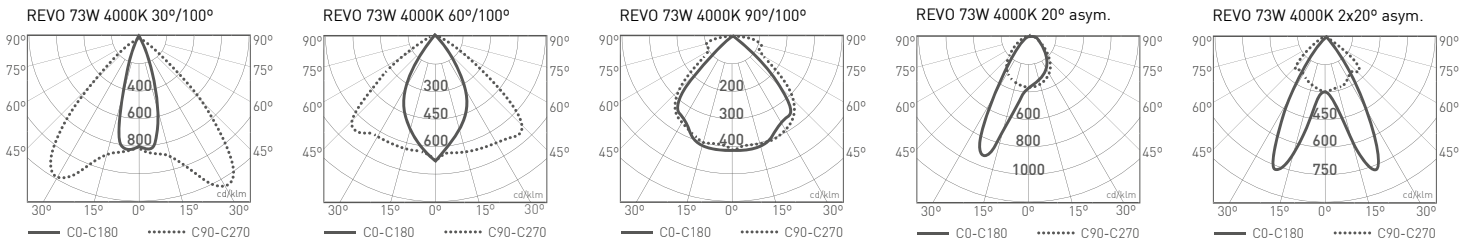
Selecione a sua opção preferida
 Sélectionnez votre option préférée

FINISHING	FI
<input type="checkbox"/> Textured White	TW
<input checked="" type="checkbox"/> Textured Black	TB
<input type="checkbox"/> Anodized Aluminium	AL



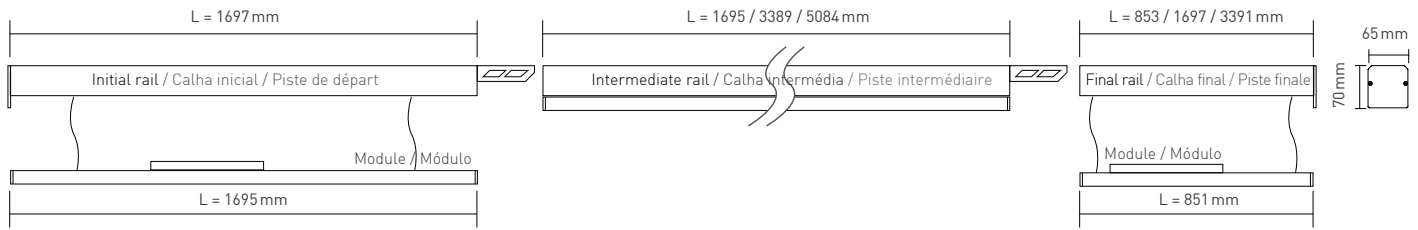
2 LED Module and Optics

Módulo de LED e Ópticos / Module LED et Optiques



Note

Full photometrics available online. / Fotometrias completas disponíveis online. / Photométries complètes disponibles en ligne.



2.1 Efficiency - CRI80



Efficiency Module - CRI>80

Product Table / Tabela de produtos / Tableau des produits

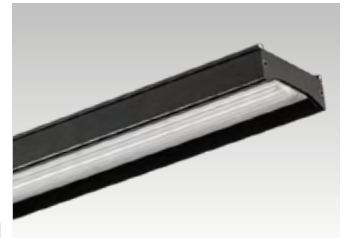
CONTROL TYPE	LENGTH	POWER	CCT	LED LUMENS	LUMINAIRE LM	EFFICACY	ORDER CODE
NF, DA	850 mm	24,9 W	4000K	5009 lm	4403 lm	201 lm/W	166XX.08BA.840.FI
			5000K	5073 lm	4460 lm	204 lm/W	166XX.08BA.850.FI
	1696 mm	49,8 W	4000K	10019 lm	8806 lm	201 lm/W	166XX.16BA.840.FI
			5000K	10147 lm	8919 lm	204 lm/W	166XX.16BA.850.FI

*Lumen details for DAS diffuser / * Detalhes de lumen para difusor DAS / * Détails de lumen pour diffuseur DAS

Select your preferred option

Selecione a sua opção preferida
Sélectionnez votre option préférée

CONTROL TYPE	XX	BEAM ANGLE	BA	FINISHING	FI
ON/OFF	NF	30°	30	<input type="checkbox"/> Textured White	TW
DALI PUSH DIM	DA	60°	60	<input checked="" type="checkbox"/> Textured Black	TB
		90°	90	<input type="checkbox"/> Anodized Aluminium	AL
		20° Asymmetric	AS		
		2x20° Asymmetric	DAS		



2.2 High Performance - CRI80



High Performance Module - CRI>80

Product Table / Tabela de produtos / Tableau des produits

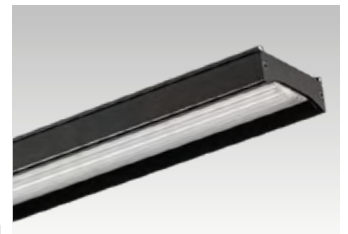
CONTROL TYPE	LENGTH	POWER	CCT	LED LUMENS	LUMINAIRE LM	EFFICACY	ORDER CODE
NF, DA	850 mm	36,0 W	4000K	6598 lm	5800 lm	182 lm/W	167XX.08BA.840.FI
			5000K	6683 lm	5874 lm	184 lm/W	167XX.08BA.850.FI
	1696 mm	73,0 W	4000K	13197 lm	11600 lm	182 lm/W	167XX.16BA.840.FI
			5000K	13366 lm	11749 lm	184 lm/W	167XX.16BA.850.FI

*Lumen details for DAS diffuser / * Detalhes de lumen para difusor DAS / * Détails de lumen pour diffuseur DAS

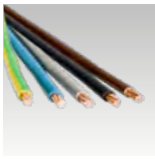
Select your preferred option

Selecione a sua opção preferida
Sélectionnez votre option préférée

CONTROL TYPE	XX	BEAM ANGLE	BA	FINISHING	FI
ON/OFF	NF	30°	30	<input type="checkbox"/> Textured White	TW
DALI PUSH DIM	DA	60°	60	<input checked="" type="checkbox"/> Textured Black	TB
		90°	90	<input type="checkbox"/> Anodized Aluminium	AL
		20° Asymmetric	AS		
		2x20° Asymmetric	DAS		



3 Accessories
Acessórios / Accessoires



ACCESSORY	RAIL LENGTH	CONTROL	TYPE	1 PHASE	3 PHASE
Wiring Options	850 mm	On/Off	3x2,5mm2	3WR.15.08	---
			5x2,5mm2	---	5WR.15.08
		Dimming	5x2,5mm2	5WR.15.08	---
			7x2,5mm2	---	7WR.15.08
		Emergency	5x2,5mm2	5WR.15.08	---
			7x2,5mm2	---	7WR.15.08
	1700 mm	On/Off	3x2,5mm2	3WR.15.17	---
			5x2,5mm2	---	5WR.15.17
		Dimming	5x2,5mm2	5WR.15.17	---
			7x2,5mm2	---	7WR.15.17
		Emergency	5x2,5mm2	5WR.15.17	---
			7x2,5mm2	---	7WR.15.17
Dimming + Emergency	7x2,5mm2	7WR.15.17	---		
	9x2,5mm2	---	9WR.15.17		



ACCESSORY	CABLE	1,5M	3M	5M
Power Cables *	3x2,5mm2	30800245	30800249	30800253
	5x2,5mm2	30800246	30800250	30800254
	7x2,5mm2	30800247	30800251	30800255
	9x2,5mm2	30800248	30800252	30800256

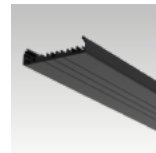


ACCESSORY	CABLE	ORDER CODE
Suspension Kit	1,5 m	80303017.SL
	3 m	80303018.SL
	5 m	80303019.SL

Note: * The number of wires should match the number chosen from the Wiring Options.
* O número de condutores deve ser igual ao número de condutores escolhido na Opção de Cablagem.
* Le nombre de fils doit correspondre au nombre choisi pour l'Option de Câblage.



ACCESSORY	ORDER CODE
End Caps	80303060.FI



ACCESSORY	LENGTH	ORDER CODE
Blind Cover	850 mm	3670850.FI
	1700 mm	3671700.FI

Select your preferred option

Selecione a sua opção preferida
Sélectionnez votre option préférée

FINISHING	FI
<input type="checkbox"/> Textured White	TW
<input checked="" type="checkbox"/> Textured Black	TB
<input type="checkbox"/> Anodized Aluminium	AL

Select your preferred option

Selecione a sua opção preferida
Sélectionnez votre option préférée

FINISHING	FI
<input type="checkbox"/> Textured White	TW
<input checked="" type="checkbox"/> Textured Black	TB
<input type="checkbox"/> Anodized Aluminium	AL



DESCRIPTION	ORDER CODE
Tridonic emergency kit 150W 50-200VDC 1H 4 cells	6080-006
Tridonic emergency kit 150W 50-200VDC 3H 4 cells	6080-007



ACCESSORY	ORDER CODE
Mounting Clip for Trunking System	5004-020
Linear Joint	5004-014

*More info. on pag. 300 / * Mais info. na pág. 300 / *Plus d'info. en pag. 300

Communication Interface / Interface de Comunicação / Interface de Communication



ACCESSORY	DIM CONTROL
Casambi DALI Interface *	8030-2590

* Only available with DALI Luminaires / DALI info. on pag. 15
* Disponível apenas com luminárias DALI / DALI info. na pág. 15
* Uniquement disponible avec les luminaires DALI / DALI info. en pag. 15



brilumen

BRILUMEN
Rua de Oliveira e Sá, nº200
ZI, Maia, Setor 1
4475-263 Maia
PORTUGAL

V.1-2021
REVO
PRODUCT CATALOG
CATÁLOGO DE PRODUTOS
CATALOGUE DE PRODUITS
WWW.BRILUMEN.COM