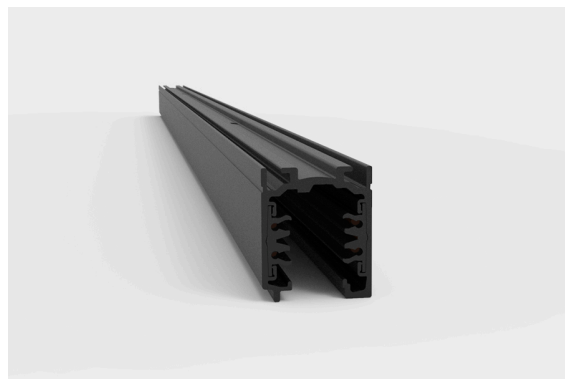
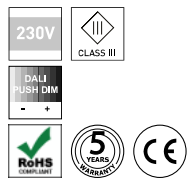


DESCRIPTION

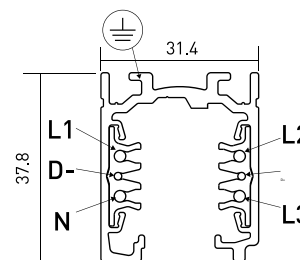
This kind of 5-circuit universal electrified track is available in surfaced-mounted, suspended and recessed versions in the ceiling. Suitable for DALI type dimming it's also possible to choose between white or black besides various connection accessories.

POWER SUPPLY 230V / TRACK

ICONOGRAPHY



TECHNICAL DRAWING



230V TRACK DALI


PRODUCT TABLE AND TECHNICAL SPECIFICATIONS - Suspended/Surface mounted Universal Track DALI 230V


LENGTH	CONTROL TYPE	FINISHING	CODE
1000	DA	BL, WH	3080-0517.FI
2000	DA	BL, WH	3080-0518.FI

SELECT YOUR PREFERRED OPTION	CONTROL TYPE	XX	FINISHING	FI
	DALI / Switch Dim	DA	Black White	BL WH

ACCESSORIES


	End Cap End Cap	White 3080-0502.WH	Black 3080-0502.BL
	1 Meter Blind Cover 1 Meter Blind Cover	White 3080-0516.WH	Black 3080-0516.BL
	Straight Coupler Straight Coupler	White 3080-0522.WH	Black 3080-0522.BL
	Straight Coupler w/ feed Straight Coupler w/ feed	White 3080-0523.WH	Black 3080-0523.BL
	Flexible Coupler Flexible Coupler	White 3080-0526.WH	Black 3080-0526.BL
	X Coupler X Coupler	White 3080-0531.WH	Black 3080-0531.BL


	Seamless Middle Feed	White	Black
	Seamless Middle Feed	3080-0532.WH	3080-0532.BL

	Suspension Kit - 1 Cable		
	Suspension Kit - 1 Cable	3080-0534.AL	

	End Feed 230V DALI	White	Black
	A - Earth Right	3080-0520.WH	3080-0520.BL
	B - Earth Left	3080-0521.WH	3080-0521.BL

	L Coupler	White	Black
	A - Earth Outside	3080-0524.WH	3080-0524.BL
	B - Earth Inside	3080-0525.WH	3080-0525.BL

	T Coupler Inside	White	Black
	A - Earth Inside Right	3080-0527.WH	3080-0527.BL
	B - Earth Inside Left	3080-0528.WH	3080-0528.BL

	T Coupler Outside	White	Black
	C - Earth Outside Right	3080-0529.WH	3080-0529.BL
	D - Earth Outside Left	3080-0530.WH	3080-0530.BL