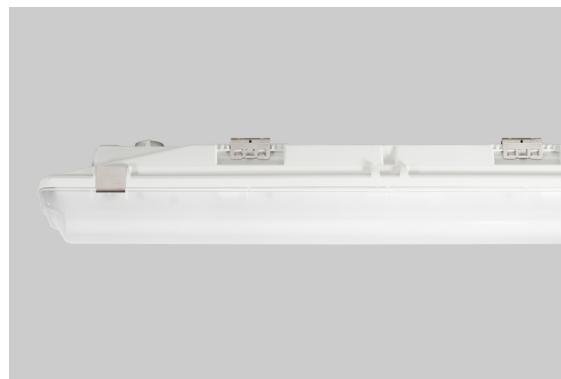


DESCRIPTION

Brilumen presents its latest innovation: The SIFTOS, a high quality industrial light fitting, 100% European, composed of extremely efficient Samsung PCB and Tridonic drivers that, in the High-Performance model, can reach up to 200lm/W. This industrial light fitting, with 5 Year Warranty, an IP65 rating, an opal polycarbonate diffuser and a 120° beam angle, is the best solution to light large areas with different purposes. The Efficiency model is suitable for warehouses, car parks, engine rooms and agricultural areas. However, for buildings that require a higher luminance level than usual, such as industrial areas, assembly lines, supermarkets and sports hall, the High-Performance model is the best option.

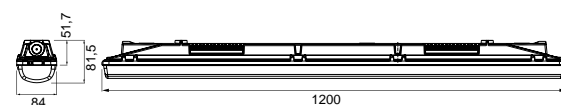
MOUNTING TYPE	Suspension/Surface
LIGHT DISTRIBUTION	Direct
POWER SUPPLY	220-230V / 50-60 Hz
WARRANTY	5 Years
CONTROL	ON/OFF



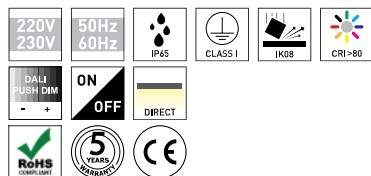
LED FEATURES

LUMINOUS EFFICIENCY	UP TO 162 lm/W
IK	IK08
CRI	CRI→80
LIFESPAN	50.000 Hours
STEPS MACADAM	3 Steps MacAdam
LUMEN MAINTENANCE	L80/F10
PHOTOBIOLOGICAL RISK	RG1

TECHNICAL DRAWING



ICONOGRAPHY



SIFTOS EFFICIENCY PRODUCT TABLE AND TECHNICAL SPECIFICATIONS - CRI→80

LENGTH	POWER	CONTROL TYPE	BEAM ANGLE	LED LUMENS	LUMINAIRE LM	COLOR TEMP.	CODE
1200	31	DA, NF	120	4850	4316	3000K	751EF25.12.30
1200	31	DA, NF	120	4942	4398	4000K	751EF25.12.40
1200	31	DA, NF	120	4942	4398	4000K	751EF25XX.12.40
1200	31	DA, NF	120	5015	4463	5000K	751EF25.12.50
1200	31	DA, NF	120	5117	4554	6500K	751EF25.12.65

SELECT YOUR PREFERRED OPTION

CONTROL TYPE	XX
DALI / Switch Dim	DA
ON/OFF	NF

ACCESSORIES



Strengthened Bracket	3080-0048
----------------------	-----------



Suspension kit 1,5m	3080-0049
---------------------	-----------



Movement Sensors Switch	8030-2235
-------------------------	-----------